



12 Prices Lane
York, YO23 1AL
Guide Price £425,000

 3  2  2  D

A superb three bedroom period terrace with views over York's historic city walls. Upgraded and maintained to an exceptionally high standard throughout this characterful property is sure to appeal to a range of buyers with its proximity to Bishopthorpe Road shopping parade and York City centre, railway station and nearby Rowntree Park. The property is also served by popular schools and amenities. Internally it comprises: Entrance hall, through lounge/dining room with feature bay window, log burner, French doors and Parquet flooring. Recently upgraded kitchen. First floor galleried landing, leading to two first floor double bedrooms, quality 3 piece house bathroom. Second floor landing leading to second floor suite with bedroom, 3 piece shower room and fitted storage. There is also an external study/utility with power and lighting. To the front there is a traditional gated walled forecourt and to the rear is a walled courtyard garden with gated service alley way. An accompanied viewing is highly recommended.



Entrance Hallway

Timber entrance door, tiled flooring, wood panelling, stairs to first floor

Lounge

12' x 11' plus bay (3.66m x 3.35m plus bay)
uPVC bay window to front, log burner with surround and hearth, Parquet flooring, ceiling rose, coving, power points, TV point, radiator



Dining room

uPVC double glazed French doors to courtyard, open fire with hearth and surround, radiator, power points, understairs cupboard

Kitchen

11' x 6'9" (3.35m x 2.06m)
Fitted wall and base units with oak countertop and Belfast sink. Two uPVC double glazed windows to side, door to courtyard, space and plumbing for appliances, recessed spotlights, parquet flooring, power points



First Floor Landing

Radiator, carpeted floors, stairs to second floor, wood panelling and storage





Bedroom 1

14'5" x 11'10" (4.39m x 3.61m)

uPVC double glazed window to front, period fireplace with surround, built in storage cupboard, radiator, power points and carpets

Bedroom 2

12'2 x 9'3" (3.71m x 2.82m)

uPVC double glazed window to rear, period fireplace, storage cupboard, radiator, power points and carpet

House bathroom

Opaque uPVC window to side, feature roll top bath with mixer tap and shower head, pedestal wash handbasin, low level wc, part tiled walls, radiator, extractor fan

2nd Floor Landing

Carpeted floors, Velux window, door to Bedroom 3

Bedroom 3

9'6" x 11' (2.90m x 3.35m)

Velux window to rear, eaves storage, column radiator, carpeted floor, power points, leading to ensuite

Ensuite

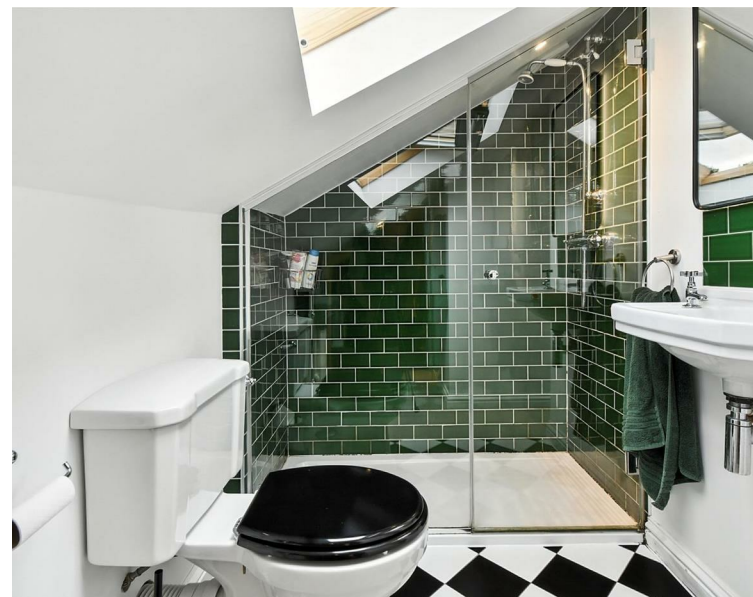
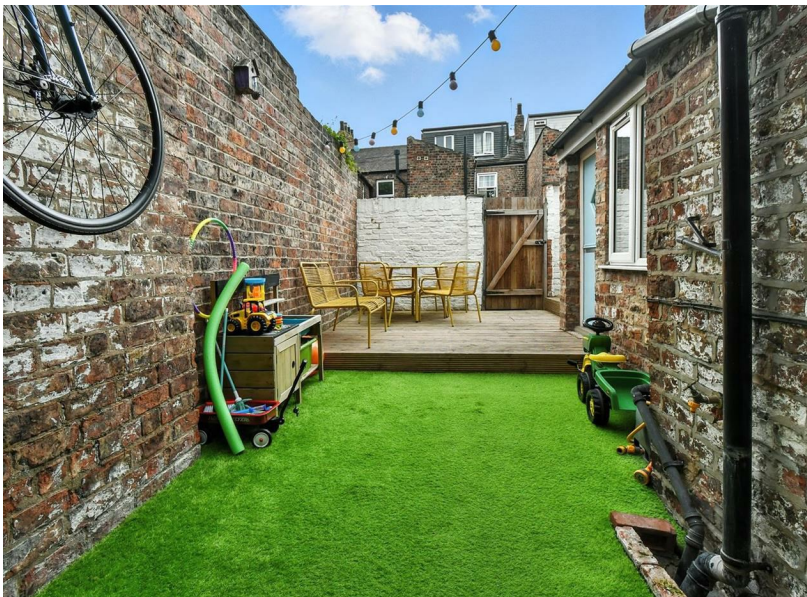
Walk in shower cubicle, low level wc, wash hand basin, towel radiator, tiled flooring, eaves storage, fitted hanging rails

External Study/Utility area

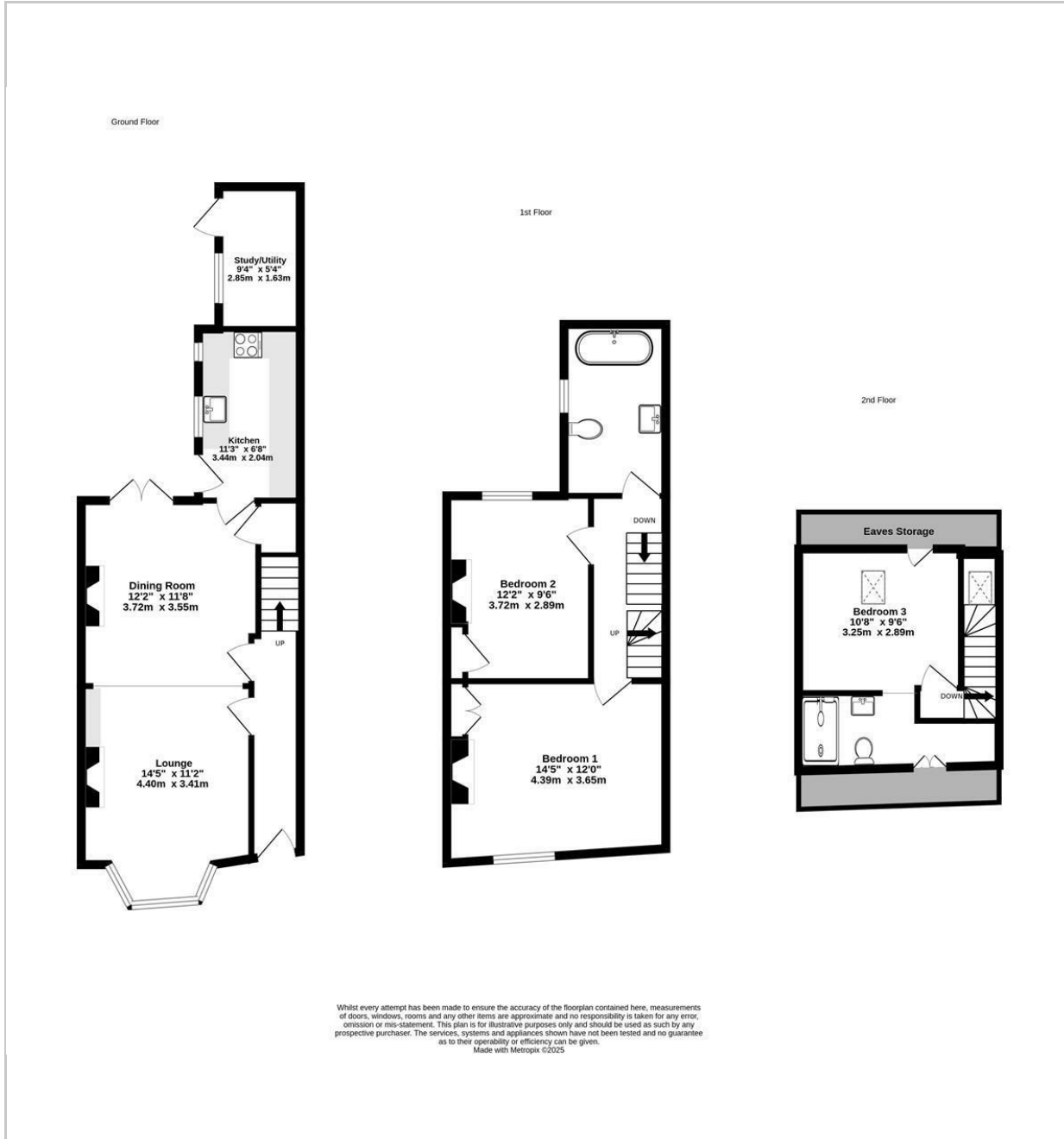
Composite door, UPVC window to side laminate flooring, power and lighting, plumbing for washing machine.

Outside

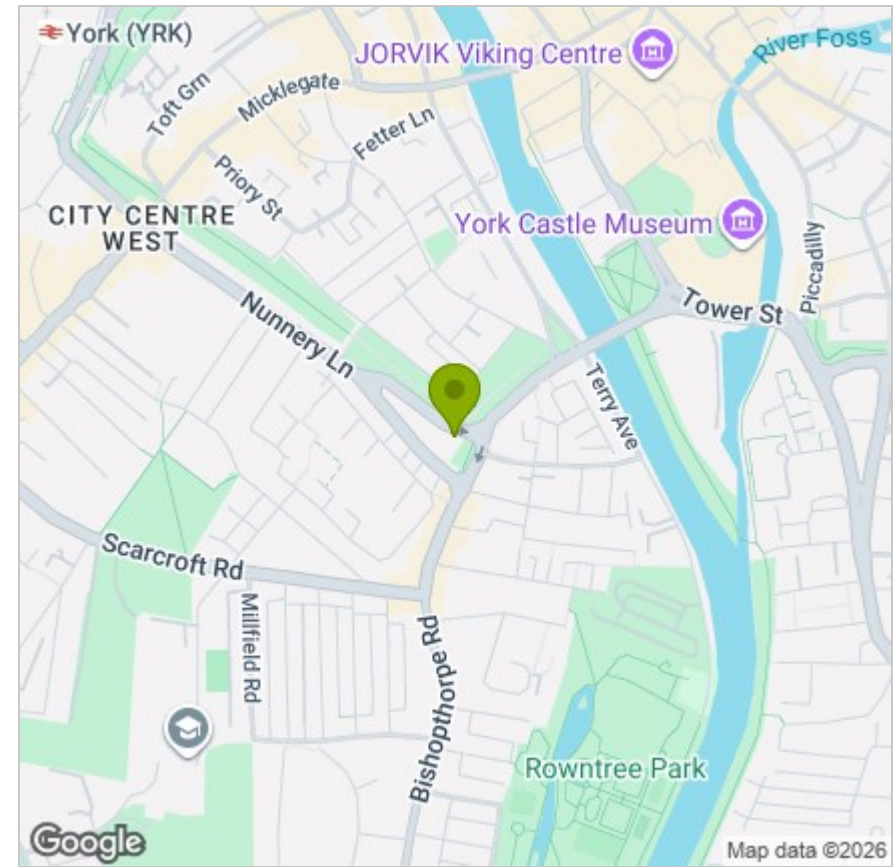
Traditional walled forecourt, rear walled courtyard, gate to service alley way, raised timber decked area



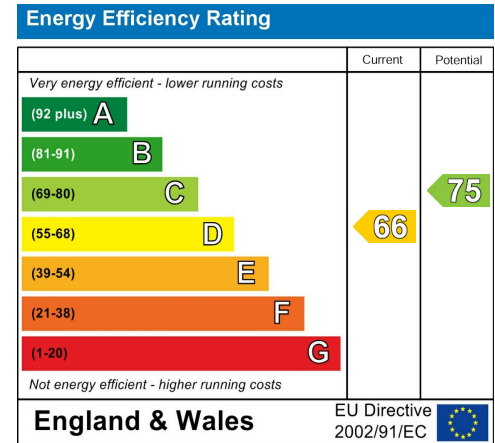
FLOOR PLAN



LOCATION



EPC



These particulars, whilst believed to be accurate are set out as a general outline only for guidance and do not constitute any part of an offer or contract. Intending purchasers should not rely on them as statements of representation of fact, but must satisfy themselves by inspection or otherwise as to their accuracy. No person in this firm's employment has the authority to make or give any representation or warranty in respect of the property.